

EFFECTO
AIR GUNS



SPARK
USER'S MANUAL

INDEX

1. GENERAL SAFETY INSTRUCTIONS	1	4.4. Regulator Group	16
2. OPERATING INSTRUCTIONS	2	4.5. Valve Group	17
2.1. Engaging and Disengaging the Safety	2	4.6. Trigger Group	18
2.2. Filling the Air Cylinder	3	4.7. Stock Group	19
2.3. Regulator Pressure Adjustment	4	4.8. Magazine Group	20
2.4. Loading the Rifle and Cocking the Mechanism	5		
2.4.1. Cocking the Mechanism	5		
2.4.2. Changing the Direction of the Cocking Handle ..	6		
2.4.3. Loading the Magazine into the Rifle	7		
2.4.4. Adjusting the Trigger	8		
3. ADJUSTING THE STOCK	9		
3.1. Adjusting the Cheek Piece Height	9		
3.2. Folding and Unfolding the Stock	9		
4. GENERAL ASSEMBLY OF THE RIFLE	12		
4.1. Assembly of the Receiver Group	13		
4.2. Assembly of the Barrel Group	14		
4.3. Plenum–Air Cylinder Group	15		



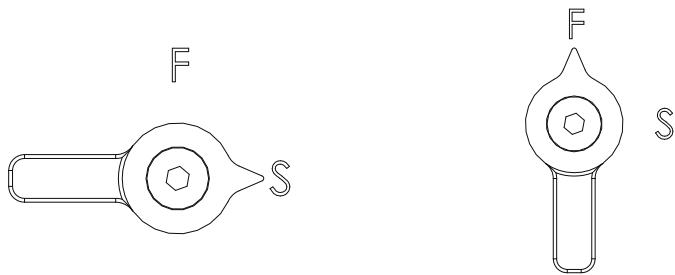
GENERAL SAFETY INSTRUCTIONS

1. Do not attempt to disassemble (remove) the rifle's air cylinder, pressure gauge, cylinder cap, regulator, or any other part of the rifle unless you are certain the air cylinder is completely empty. Failure to follow this instruction may cause accidents that can result in death or permanent injury and may damage your rifle.
2. Do not use cylinders that are dented, cracked, or otherwise deformed. Immediately contact your dealer, the manufacturer, or an authorized service center for repair or replacement.
3. Repairs or replacements must be carried out by an authorized service center or the factory.
4. When you first take the rifle in hand, make sure the rifle is unloaded.
5. Even if you know the rifle is unloaded, always treat it as if it was loaded.
6. Never point the rifle at anyone and do not allow anyone to point the rifle at you.
7. When carrying the rifle, never allow the muzzle to point at another person.
8. Do not fire the rifle at anything other than legally permitted targets. Respect local laws and regulations regarding where and how you may discharge an air rifle.
9. Before shooting, be sure of your target and what lies beyond it.
10. Do not shoot at targets that may cause pellets to ricochet. Never leave a loaded rifle unattended or unsecured.
11. Store the rifle and pellets/ammunition separately, and do not allow others to use your rifle.
12. Do not fire the rifle while the air cylinder is removed or completely empty.
13. When filling the air cylinder, do not use any gas or gas mixture other than CLEAN, DRY AIR.
14. Keep the safety engaged (in the ON/active position) until you are in the proper firing position and ready to shoot. If the safety is off (inactive) and the rifle is dropped or struck, it may discharge.
15. Use only high-quality pellets and slugs as specified for your rifle; do not use other types of ammunition.
16. Take appropriate safety precautions while filling the air cylinder or operating the rifle. Eye and ear protection should be used during these operations.
17. This rifle must not be disassembled by anyone other than the manufacturer or an authorized repair service; unauthorized disassembly will void the manufacturer's warranty.

2. OPERATING INSTRUCTIONS

2.1. Engaging and Disengaging the Safety

Your rifle is equipped with a lever-type safety. To engage the safety, rotate the safety lever on the stock body to the S (Safety) position. To disengage the safety (set the rifle to fire), rotate the lever to the F (Fire) position.



2.2 Filling the Air Cylinder

Before filling your rifle, make sure that the safety is in the ON (active) position, that there are no pellets in the barrel, that the magazine is not attached to the rifle, and that the mechanism is in the rear position (lever action cocked). After this step, your rifle is ready for filling.

During the filling of the air cylinder, follow the gauge on the filling device or scuba tank to monitor the amount of air in the cylinder. Do not look at the gauge on the air cylinder during filling.

To start filling, attach the filling device to the filling port on the rifle, then open the valve on the scuba tank and check the gauge on the scuba tank.

The gauge on the air cylinder indicates the air pressure inside the cylinder.

When the gauge reaches 300 bar, close the valve.

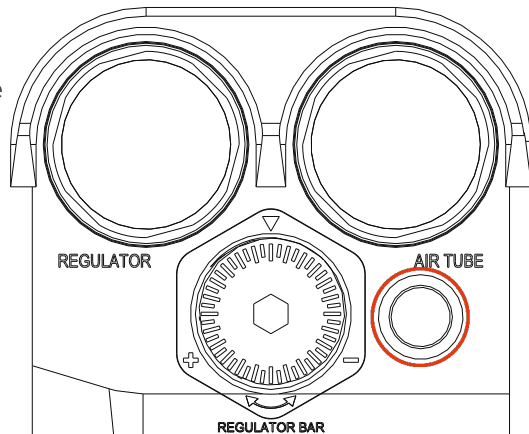
Then, open the bleed valve on the filling device to release the air in the hose.

You can now disconnect the filling device from your rifle.

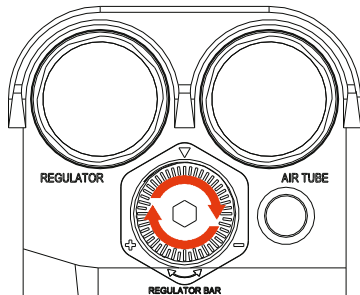
CAUTION! Do not remove the filling device without first opening the bleed valve to release the air.

CAUTION! The maximum fill pressure for the SPARK model is 300 bar.

CAUTION! Only clean and dry air should be used to fill the air cylinder.



2.3. Regulator Pressure Adjustment



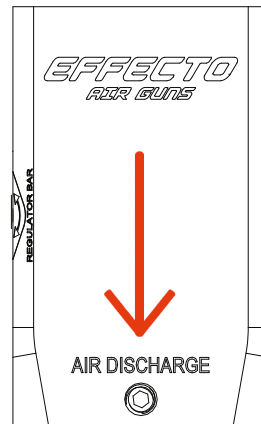
A 4 mm Allen key is used to adjust the regulator pressure. Turning the adjustment screw clockwise increases the pressure, while turning it counterclockwise decreases the pressure.

The adjustment is complete once the desired pressure is reached by checking the pressure on the gauge.

For proper performance, the pressure should be set according to the type of pellets or slugs being used.

CAUTION! The regulator pressure must not exceed 200 bar.

CAUTION! After heavy use, the regulator adjustment screw should be removed and the regulator maintained.



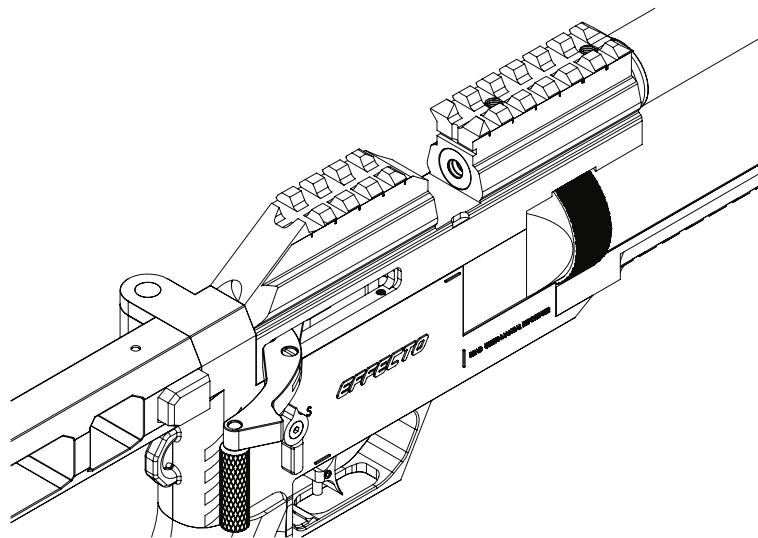
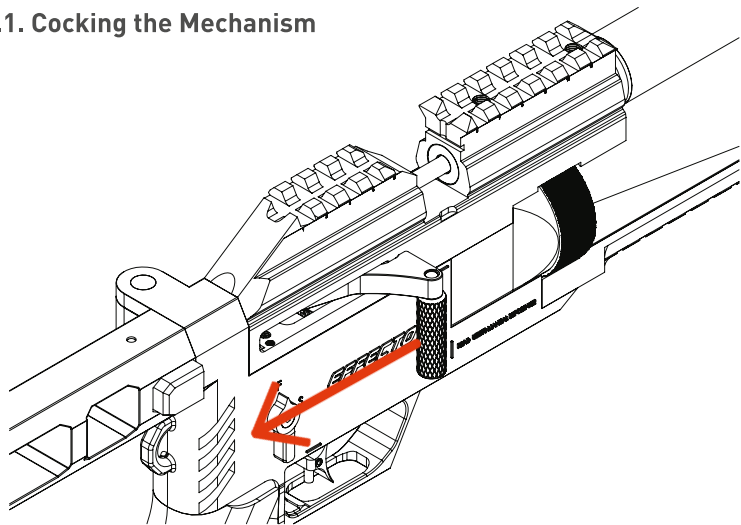
The air inside the regulator is released using the bleed screw located under the regulator.

Loosen the screw with a 2 mm Allen key to release the air. Once the air is completely discharged, tighten the screw securely and check it.

CAUTION! To prevent possible accidents, the screw must not be loosened so far that it comes out of the body.

2.4 Loading the Rifle and Cocking the Mechanism

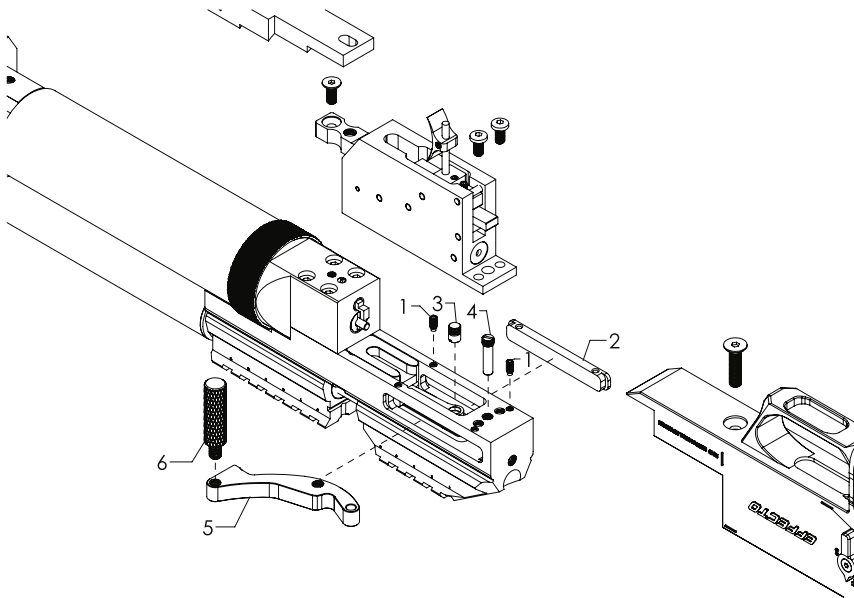
2.4.1. Cocking the Mechanism



As shown in the image, the mechanism is cocked by pulling the cocking lever backward.

CAUTION! Do not pull the trigger while the mechanism is in the cocked position.

2.4.2. Changing the Direction of the Cocking Lever



The cocking lever direction change procedure should be performed in a clean and organized workspace. By following the steps below in order, the cocking lever can be safely removed and installed in the desired direction.

- Remove the “Side Cover” marked “2.” This exposes the cocking lever area.
- Remove the screws marked “3” and then “4” to remove the “Cocking Lever” marked “5.”
- Remove the “Cocking Lever Handle” marked “6” from the cocking lever to completely detach it.

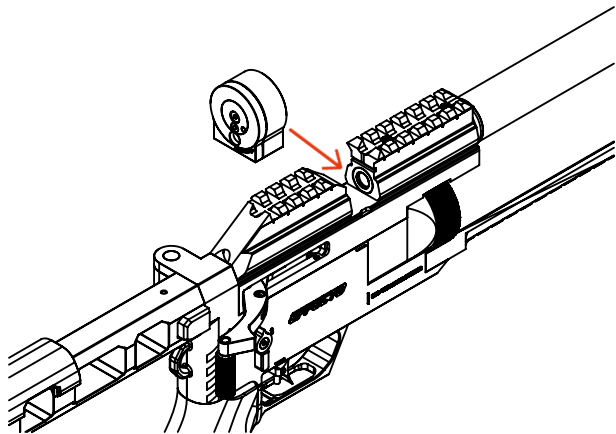
Direction Change and Reassembly (Installation) Procedure:

- Place the “Cocking Lever Handle” marked “6” in the desired direction.
- Carefully fit the “Cocking Lever” marked “5” into the receiver in the new direction.
- Secure the lever by installing screws “4” first, then “3.”
- Reinstall the side cover marked “2” and tighten screws “1” to secure the cover.
- Reinstall the trigger group into the receiver, tighten the screws, and reinstall the Picatinny rail.
- Reattach the stock to the receiver and tighten the screws.

After completing these steps, the cocking lever is safely ready for use in the new direction.

CAUTION! The screws are secured with threadlocker. Before removal, apply hot air at a temperature that will not damage the coating, then apply force to remove the screws.

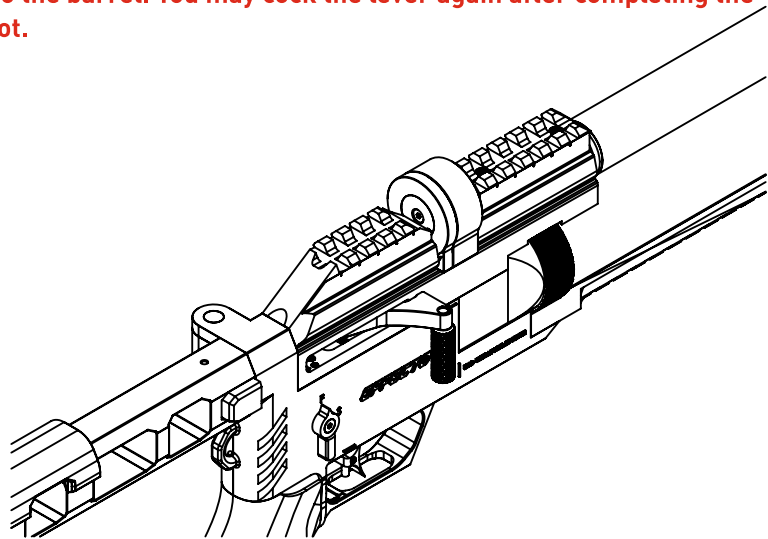
2.4.3. Loading the Magazine into the Rifle



Insert the magazine into its slot from the left, as shown. Make sure that the pin under the magazine fits into its slot and that the magazine's pellet exit hole is aligned with the barrel.

Push the cocking lever forward and seat it in its slot to make your rifle ready to fire.

CAUTION! Do not cock the lever again after a pellet has been loaded into the barrel. You may cock the lever again after completing the shot.

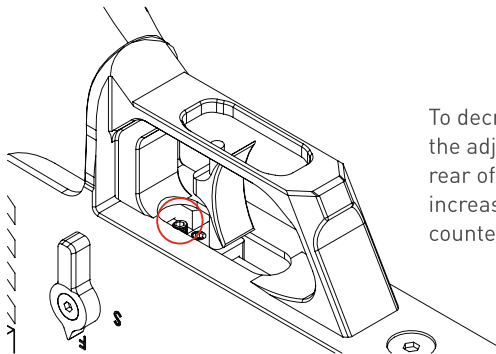


2.4.4. Adjusting the Trigger

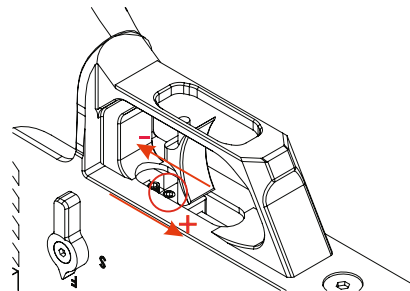
The trigger of your rifle has been properly adjusted by the manufacturer before delivery.

If you do not have experience in trigger adjustment, it is recommended to leave the trigger as set by the factory. Incorrect trigger adjustments may cause malfunctions in trigger operation.

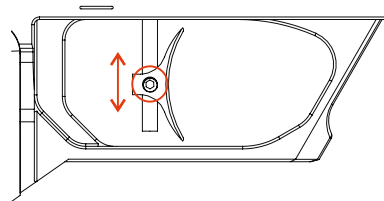
CAUTION! Before adjusting the trigger, make sure that there are no pellets loaded in the rifle. Otherwise, the rifle may discharge and cause serious harm to people nearby.



To decrease the sear engagement, turn the adjustment screw located at the rear of the trigger clockwise; to increase it, turn the screw counterclockwise.



The setscrew on the trigger adjustment rod is loosened and moved to the desired position. Turning it in the (+) direction decreases the trigger pull weight, while turning it in the (-) direction increases the trigger pull weight. After adjusting the distance, tighten the setscrew to secure the position.

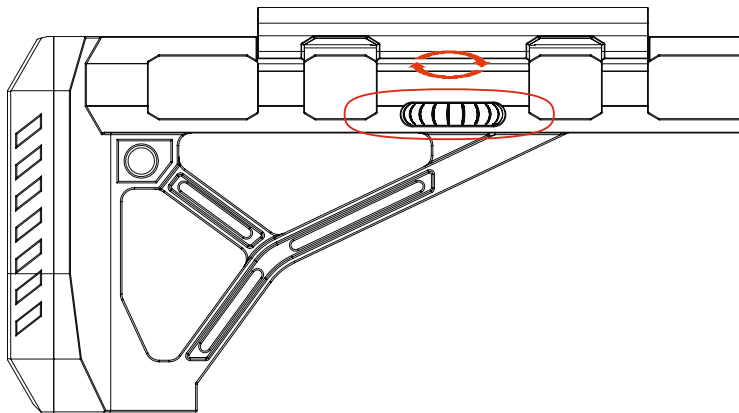


The setscrew on the trigger is loosened to adjust the trigger height. After confirming the correct height and direction, tighten the setscrew to secure it in place.

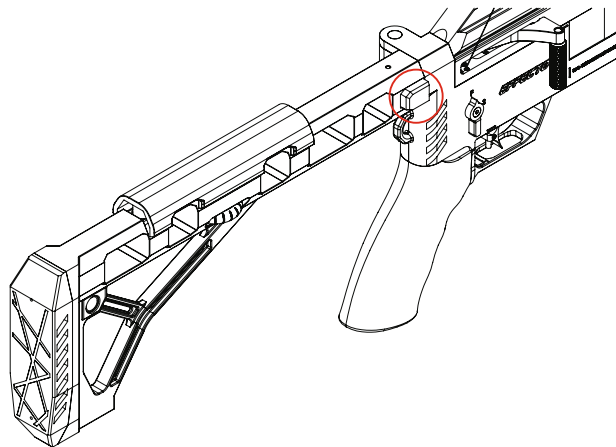
3. ADJUSTING THE STOCK

3.1. Adjusting the Cheek Piece Height

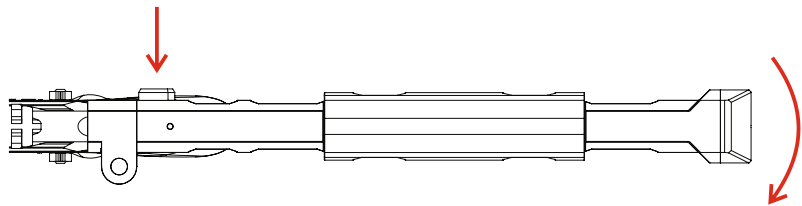
Adjust the height of the cheek piece to your preference by turning the drum located under the cheek piece to the right or left.



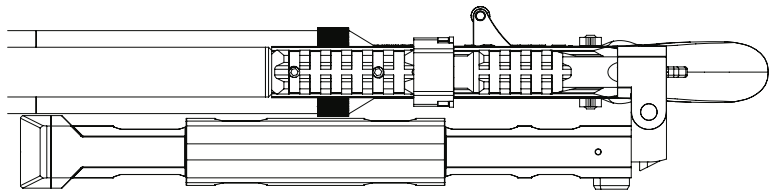
3.2. Folding and Unfolding the Stock



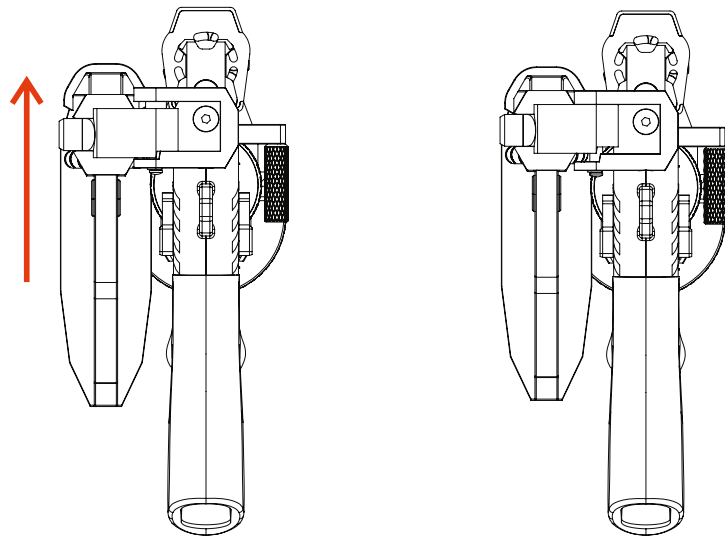
To fold the stock, press the button on the side and pull the stock sideways until it locks in place.



Stock Folding Procedure



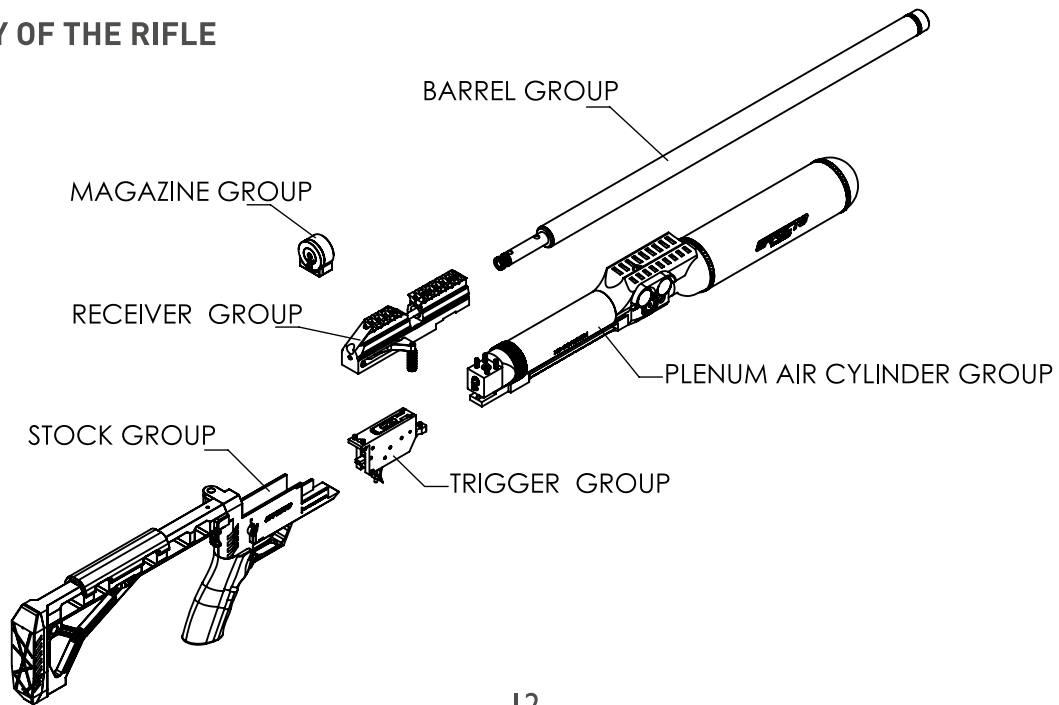
Stock Position After Folding



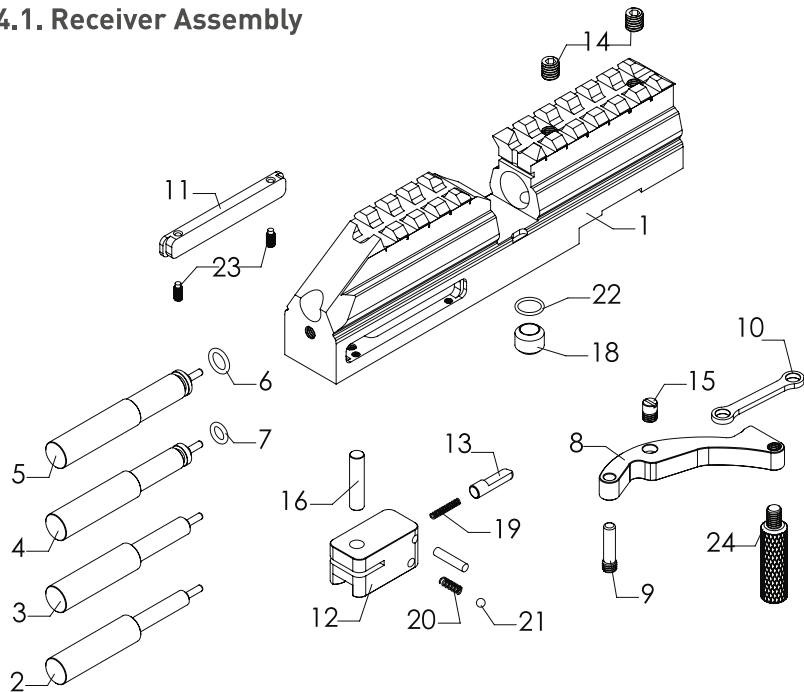
To unfold the folded stock, lift the stock upward as shown in the image to release it from the slot. Then, move it in the opening direction to unfold the stock and secure the latch, placing it in the usable position.

SPARK
PARTS CHART

4. GENERAL ASSEMBLY OF THE RIFLE

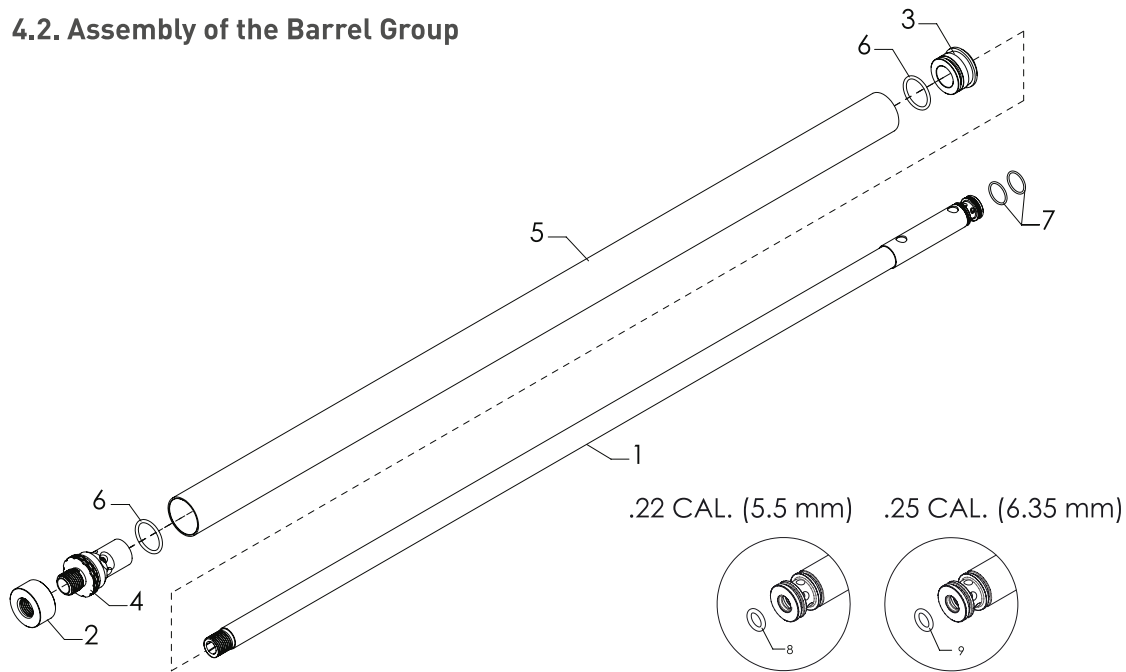


4.1. Receiver Assembly



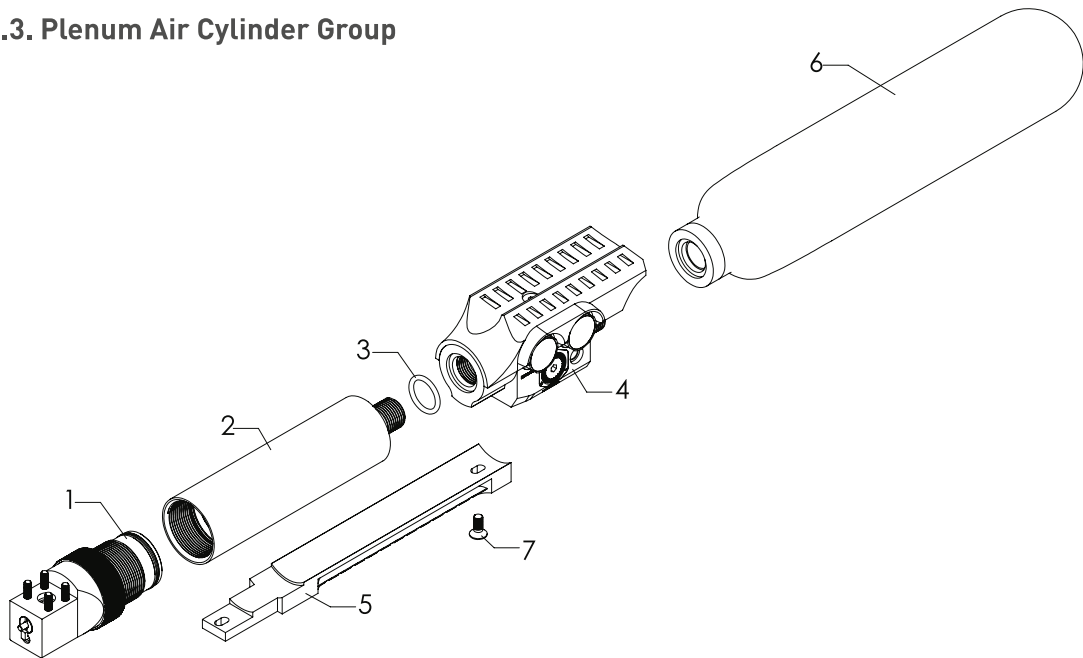
NO	PART NAME	QTY
1	SPARK RECEIVER	1
2	SPARK MECHANISM 5.5 MM	1
3	SPARK MECHANISM 6.35 MM	1
4	SPARK MECHANISM 7.62 MM	1
5	SPARK MECHANISM 9 MM	1
6	6.5X1.5 MM O-RING (70 SHR)	1
7	5X1.5 MM O-RING (70 SHR)	1
8	SPARK COCKING LEVER	1
9	SPARK COCKING LEVER LOCKING SCREW	1
10	SPARK COCKING LEVER HANDLE	1
11	SPARK RECEIVER SIDE COVER	1
12	SPARK COCKING LEVER PULL BUSHING	1
13	SPARK COCKING LEVER LOCK	1
14	M6X6 MM FLAT SETSCREW	2
15	M5X0.8 MM THREAD FLAT SETSCREW	1
16	5X21.8 MM DRUM PIN	1
17	3X13.8 MM DRUM PIN	1
18	EFFECTO TP REGULATOR	1
19	SPARK COCKING LEVER LOCK SPRING	1
20	Ø3 MM BALL SPRING	1
21	Ø3 MM STEEL BALL	1
22	8X1 MM O-RING (70 SHR)	1
23	M3X5 MM CHAMFERED END SETSCREW	2
24	EFFECTO COCKING LEVER HANDLE	1

4.2. Assembly of the Barrel Group



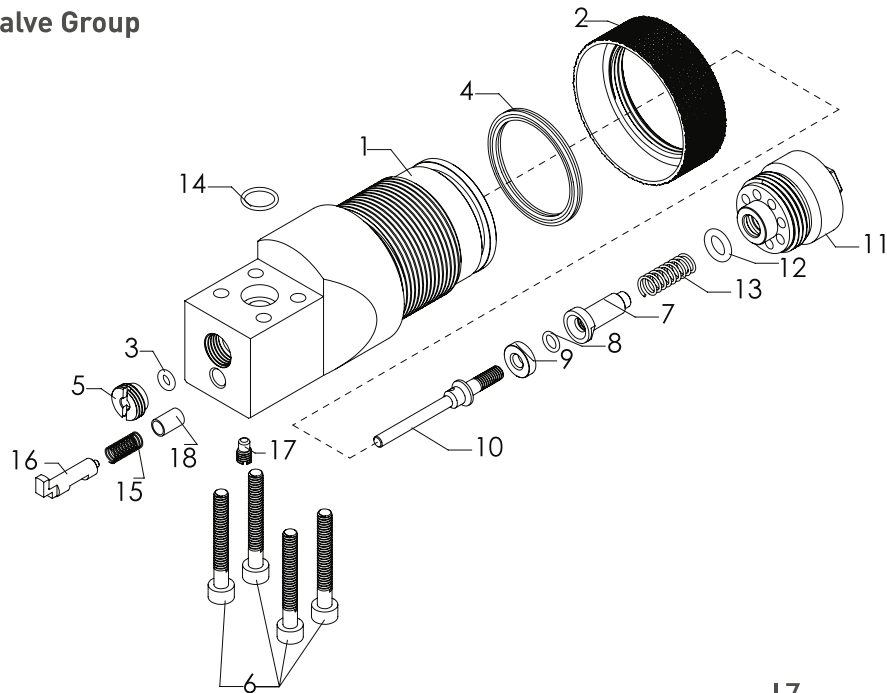
NO	PART NAME	QTY
1	SPARK BARREL	1
2	SPARK JACKET TIP	1
3	EFFECTO BARREL REAR FIXING	1
4	SPARK BARREL TIP FIXING	1
5	SPARK JACKET	1
6	17.17X1.78 MM O-RING (70 SHR)	2
7	12X1 MM O-RING (70 SHR)	2
8	5.5X1.5 MM O-RING (70 SHR)	1
9	6.5X1.5 MM O-RING (70 SHR)	1

4.3. Plenum Air Cylinder Group



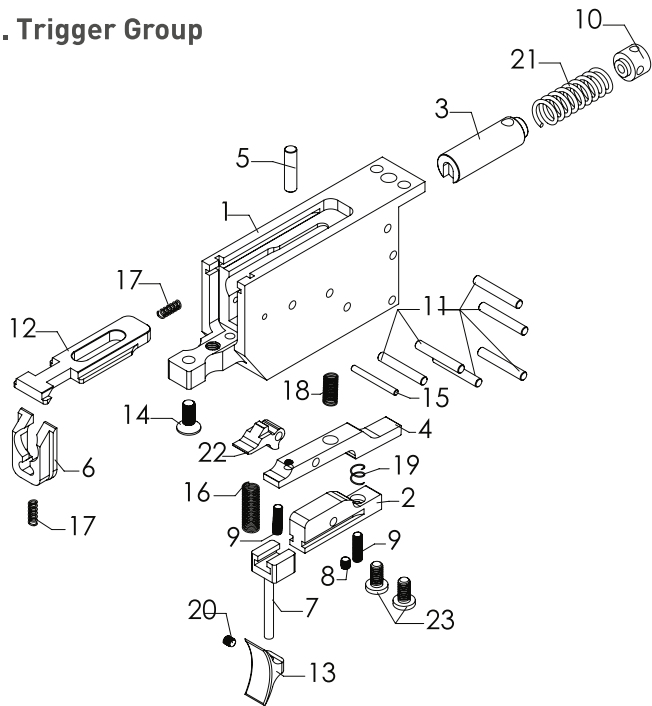
NO	PART NAME	QTY
1	SPARK VALVE ASSEMBLY	1
2	PLENUM	1
3	17.86X2.62 MM O-RING (90 SHR)	1
4	REGULATOR ASSEMBLY	1
5	PICATINNY RAIL	1
6	AIR CYLINDER	1
7	M5X12 MM COUNTERSUNK HEX SOCKET SCREW	1

4.5. Valve Group



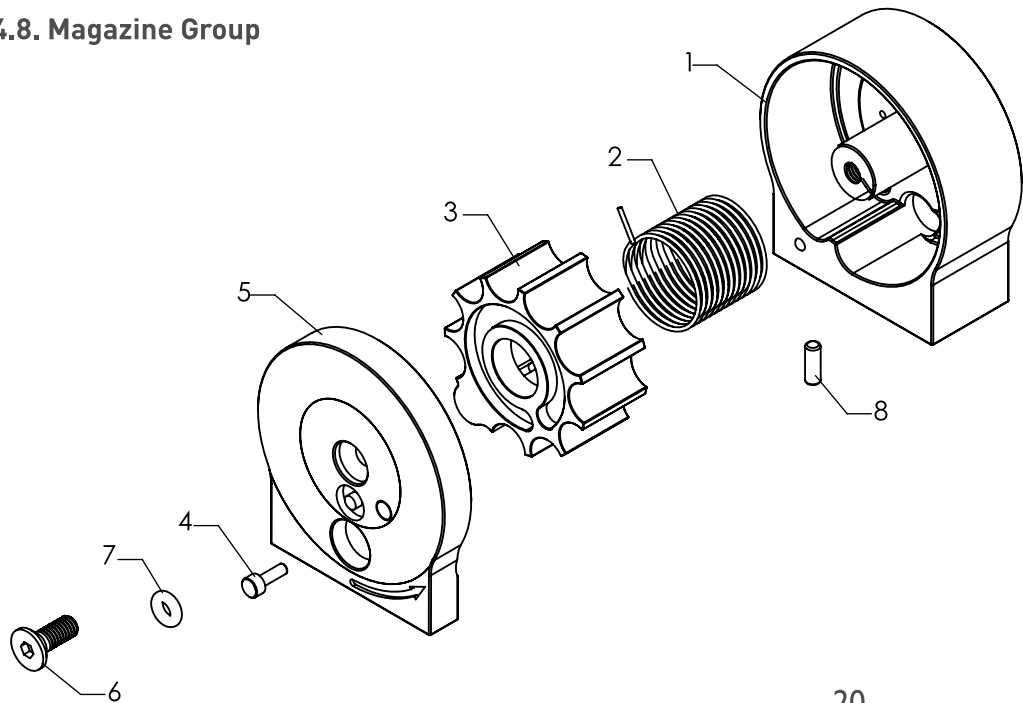
NO	PART NAME	QTY
1	SPARK VALVE SEAT	1
2	SPARK PLENUM LOCKNUT	1
3	3X1.5 MM O-RING (70 SHR)	1
4	28.24X2.62 MM X-RING (70 SHR)	1
5	EFFECTO VALVE PIN BUSHING	1
6	M4X30 MM SET SCREW	4
7	SPARK VALVE BODY	1
8	4X1 MM O-RING (70 SHR)	1
9	SPARK PLASTIC VALVE	1
10	SPARK VALVE PIN	1
11	SPARK VALVE SPRING SEAT	1
12	5.7X1.9 MM O-RING (90 SHR)	1
13	SPARK VALVE SPRING	1
14	8X1 MM O-RING (70 SHR)	1
15	SPARK TRIGGER SPRING	1
16	OPERATING LEVER	1
17	OPERATING LEVER SCREW	1
18	OPERATING LEVER STOP	1

4.6. Trigger Group



NO	PART NAME	QTY
1	SPARK TRIGGER ASSEMBLY HOUSING	1
2	SPARK TRIGGER BLOCK	1
3	SPARK HAMMER	1
4	SPARK INNER TRIGGER	1
5	4X15.8 MM DOWEL PIN	1
6	SPARK HAMMER LOCK	1
7	SPARK TRIGGER ADJUSTMENT ROD	1
8	M3X3 MM SET SCREW	1
9	M3X10 MM SET SCREW	2
10	SPARK HAMMER SPRING RETAINER	1
11	M3X19.8 MM DOWEL PIN	6
12	SPARK INNER LOCK UPPER SLIDE	1
13	SPARK ADJUSTABLE TRIGGER	1
14	M4X12 MM COUNTERSUNK HEX SOCKET SCREW	1
15	2X19.80 MM DOWEL PIN	1
16	SPARK SEAR SPRING	1
17	SPARK INNER LOCK SPRING	2
18	SPARK INNER TRIGGER SPRING	1
19	SPARK TRIGGER BLOCK SPRING	1
20	M2X2 MM SET SCREW	1
21	SPARK HAMMER SPRING	1
22	SPARK SEAR	1
23	M4X8 MM BUTTON HEAD HEX SOCKET SCREW	2

4.8. Magazine Group



NO	PART NAME	QTY
1	MAGAZINE BODY	1
2	MAGAZIN ACTION SPRING	1
3	ROTARY	1
4	MAGAZINE PIN	1
5	MAGAZINE FRONT COVER	1
6	M3x8 COUNTERSUNK HEAD SCREW	1
7	2X1.5 MM O-RING (70 SHR)	1
8	2X5.8 MM DOWEL PIN	1

E FFEC TO IS A TRADEMARK OF HUĐLU AV TÜFEKLERİ KOOPERATİFİ.

Huđlu Av Tüfekleri Kooperatifi - Beyşehir Organized Industrial Zone Branch

Bayavşar Mah. Sanayi Cad.

No: 26 42700

Beyşehir/Konya/Türkiye

Satış Ofisi / Sales Office

T. +90 332 516 16 00

F. +90 332 516 10 31

Fabrika / Factory

T. +90 332 516 11 53 (PBX)

F. +90 332 516 10 32